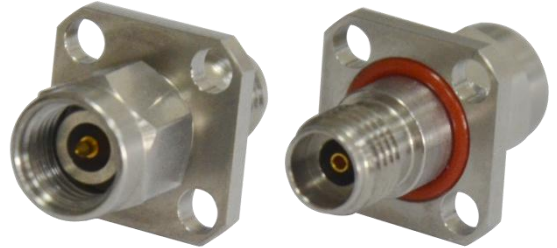


产品型号 (Product model) : KM-KF-F4-J215

Connectors1: 2.92mm Male

Connectors2: 2.92mm Female



## 产品特点(Product features):

1. 工作频率高(High working frequency)
2. 测试寿命长(Long test life)
3. 驻波及损耗低(Standing wave and low loss)
4. 4孔法兰安装(4 hole flange installation)

## 电气性能 (Electrical properties) :

| 性能<br>(properties)       | 描述<br>(Describe) | 参数<br>(parameter) |
|--------------------------|------------------|-------------------|
| 频 率<br>(Frequency Range) |                  | DC-40Ghz          |
| 阻 抗<br>(Impedance)       |                  | 50Ω               |
| 驻 波<br>(VSWR)            |                  | <1.15@40GHz       |

## 材料镀层 (Material and Plating) :

| 名称<br>(Name)             | 材质<br>(Texture of) | 镀层<br>(Plating)      |
|--------------------------|--------------------|----------------------|
| 内导体<br>(Inner conductor) | Beryllium copper   | Gold-plated          |
| 外导体<br>(Outer conductor) | Stainless steel    | Polished/Passivation |
| 介质体<br>(Medium body)     | PEI                | N/A                  |

外观尺寸(Appearance size):

